

### State of Wyoming Corner Record

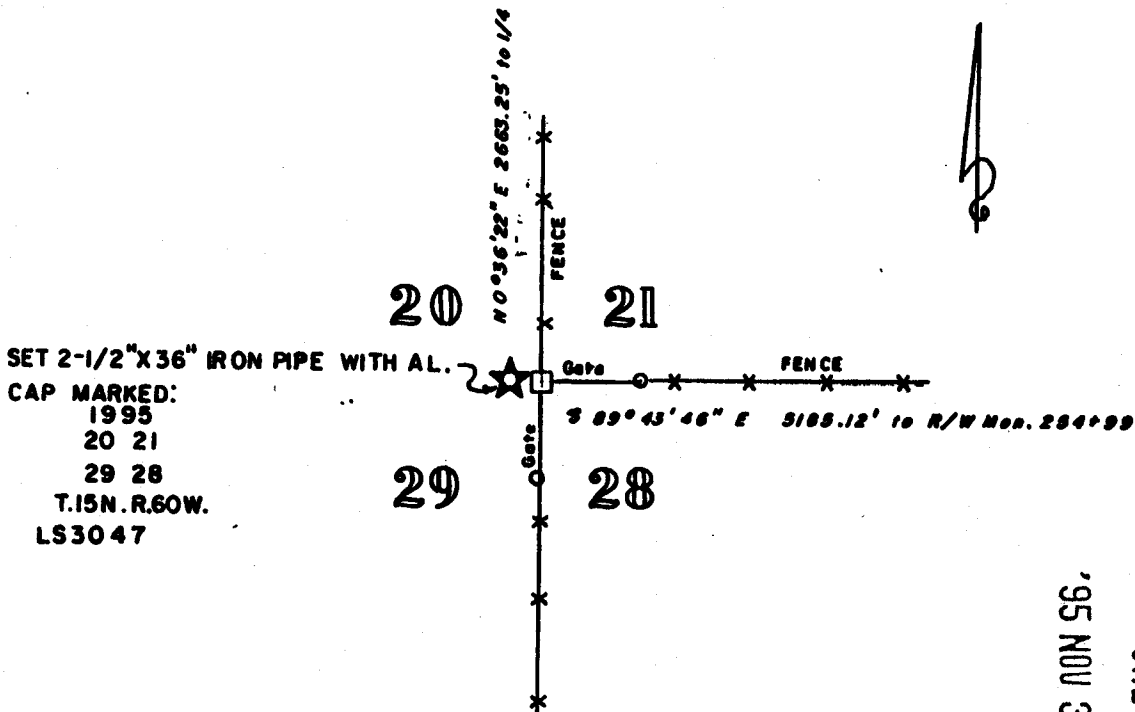
(In compliance with the *CORNER PERPETUATION AND FILING ACT*, Wyoming Statutes, 1977, Section 36-11-101, et, seq., and the Rules and Regulations of the Board of Registration for Professional Engineers and Professional Land Surveyors)

Reverse side of this form may be used if more space is needed.

Record of original survey and citation of source of historical information (if corner is lost or obliterated). Description of corner monumentation evidence found and/or monument and accessories established to perpetuate the location of this corner. Sketch of relative location of monument, accessories, and reference points with course and distance to adjacent corner(s) (if determined in this survey). Method and rationale for reestablishment of lost or obliterated corner.

GLO North between Sections 28 and 29 80 chains, set 20x18x9 limestones for corner 20,21, 28 & 29.

Set 2 1/2" x 36" iron pipe with an aluminum cap set at intersection of fences as shown reputed to be the Section Corner by long-time land owners, original corner not found.  $80^{\circ}36'22''E$  2663.25 feet from 1/4 20/21 and  $N89^{\circ}43'46''W$  a distance of 5185.12 from a Wyo. Highway Dept. R/W Mon. 254+99, 5235.12 to Sec. Cor. 21, 22, 29 & 28.



'95 NOV 30 PM 2 42  
 LARAMIE COUNTY CLERK  
 CHEYENNE, WY.

173102

Date of Field Work: June 1995 Office Reference: \_\_\_\_\_

#### CROSS INDEX DIAGRAM

	1	2	3	4	5	6	7	8	9	10	11	12	13	14	15	16	17	18	19	20	21	22	23	24	25
A																									
B																									
C		6																							
D																									
E																									
F																									
G																									
H																									
I																									
J																									
K																									
L																									
M																									
N																									
O																									
P																									
Q																									
R																									
S																									
T																									
U																									
V																									
W																									
X																									
Y																									
Z																									

Firm/Agency, Address

Terrestrial Surveying & Mapping

P. O. Box 82

Cheyenne, WY 82003

Telephone Number: 634-9360

This corner record was prepared by me or under my direction and supervision.

SEAL & SIGNATURE

